

The SG-J louvre window is suitable for natural ventilation applications. Supplied with single glazed square edged blades for flush finish, and non-insulated/non-thermally broken frames, the SGJ is suitable for use in non-insulated areas such as winter gardens.

- For natural ventilation applications.
- Single glazed.
- Square edged blades for a flush external appearance.
- 2mm horizontal gap between blades.
- Point fixed, all glass blades (frameless).
- 50mm frame depth.
- For installation in vertical facades
- Non-thermally broken and non-insulated frames.
- Standard with 78° opening angle, up to 90° if required.



For natural ventilation only



Contact for project specific technical details



See below for framing and motor types



Frameless single glazed square edged blades

	SGJ-50 Certifications & Test Data
Frame Depth	50mm (+25mm on driven side)
Glazing Types	Single glazed panel
Frame Width	38mm
Unit Width	300-1500mm
Max Frame Height	Unlimited (sections)
Louvre Height	120-300mm
<b>EN12101-2:2003</b>	<b>Not Compliant</b>
Aerodynamic free area	Individual Calc.
Wind Load	Not tested
Low Ambient Temperature	Not tested
Reliability Class	Not tested
Snow Load	Not tested
Resistance to heat	Not tested
<b>EN14351-1</b>	
Air Permeability (EN12207)	Not tested
Watertightness (EN12208)	Not tested
Wind Load Class (EN12210/12211)	Not tested
Durability (DIN EN 1191)	Class 3
Sound Reduction (DIN EN ISO 717-1)	Not tested





# SGJ-50

## Construction

- Louvre windows for installation in vertical facades
- Non-thermally broken frame and blade profiles manufactured from extruded aluminium.
- Louvre blades consist of point fixed, single glazed, all glass panes.
- Square edged blades for a flush external appearance.
- 2mm distance between glass edges horizontally, in closed position.
- Louvre windows consist of one or more stacked louvres, which open on a central pivot. As a rule, the axis of rotation is in the middle of the louvre, but can also be modified up to 1/3 - 2/3 after technical clarification
- Standard with 78° opening angle, up to 90° if requested.

## Profile Dimensions

- Frame depth: 50 mm
- Frame view width: 38 mm

## Seals

- Silicone frame seal.
- Horizontal profile joints with brush and felt seal.

## Fixings

- All unit fittings are concealed
- Made of corrosion-free or galvanised materials

## Finishes

- Profiles can be anodised, powder coated or wet paint coated in RAL or special colours.
- Standard PPC to 40 Microns unless otherwise stated.

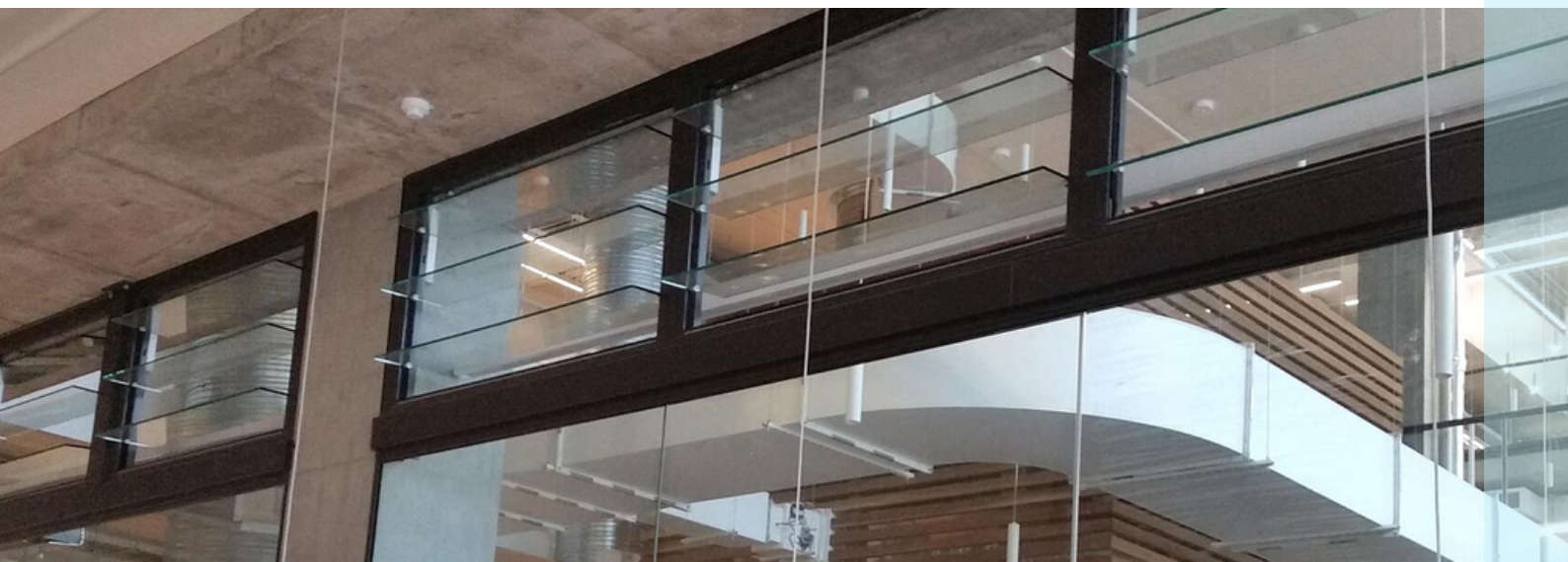
## Applications

- Natural ventilation
- NSHEV certified to DIN EN 12101-2 for natural smoke ventilation
- For installation in vertical facades (further applications after technical clarification) .

## Size Range

- Minimum frame width: 300mm
- Maximum frame width: 1500mm
- Units exceeding maximum width will be supplied as 2 units, joining together on site,
- Slat height variable: 120- 300mm

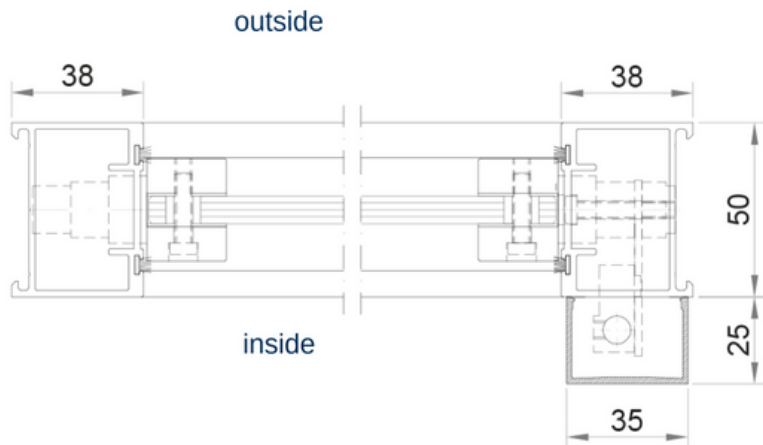
Control Option	Notes
Manual Hand Lever	
Articulated Crank Rod	
230V AC	
24V DC	
24V DC with SK3 anti-trapping	
24V DC with SK3 anti-trapping & 10 year battery backup for auto close/open	
Pneumatic Cylinder	



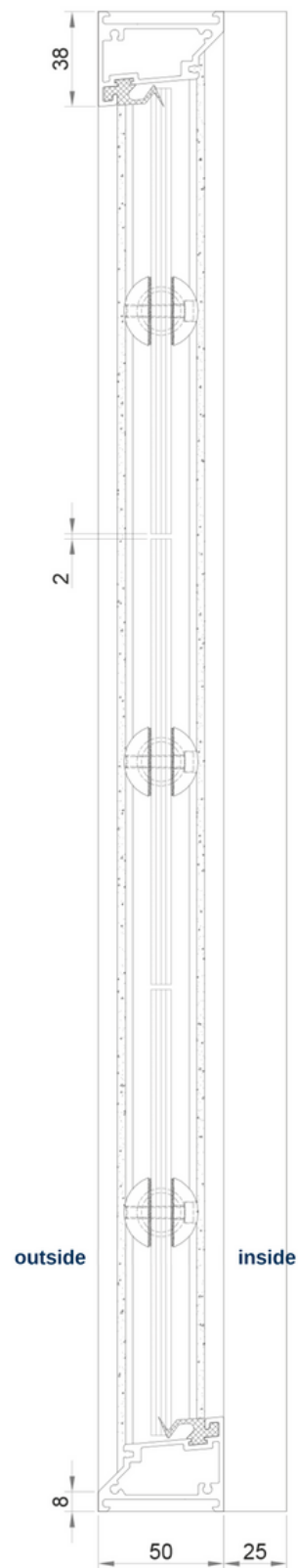
# Framing Options

Our SGJ-50 range is available with a number of different control and framing options to suit most applications. Bespoke options are available.

## Standard framing



## Vertical Section (no motor shown)



[Bespoke framing options are available, please contact head office for further information.](#)