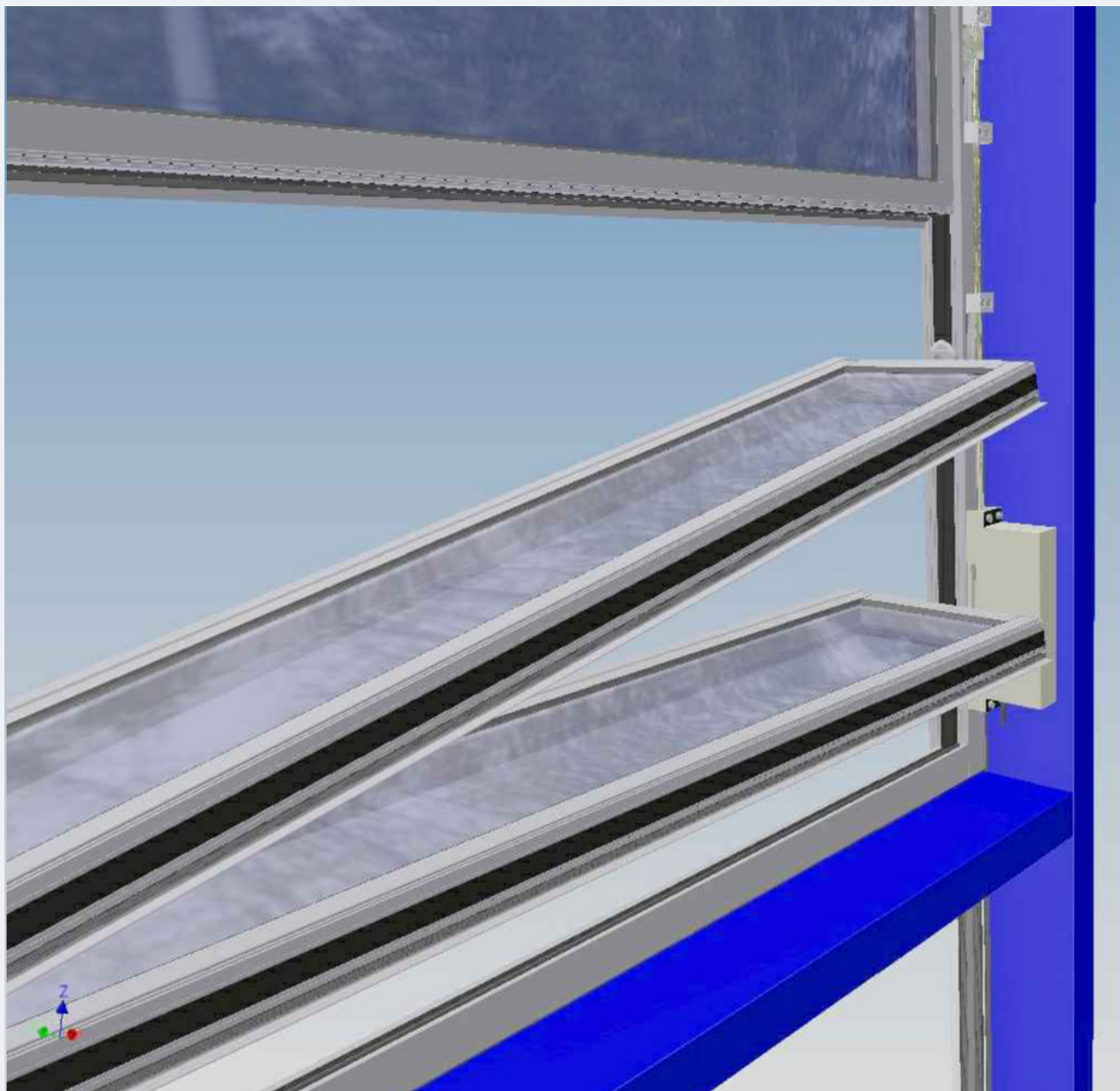


For units weighing over 80kg, louvre blades will be supplied loose (unless otherwise agreed), to facilitate lifting/manual handling.

The following guide gives step-by-step instructions for the installation of the loose blades.

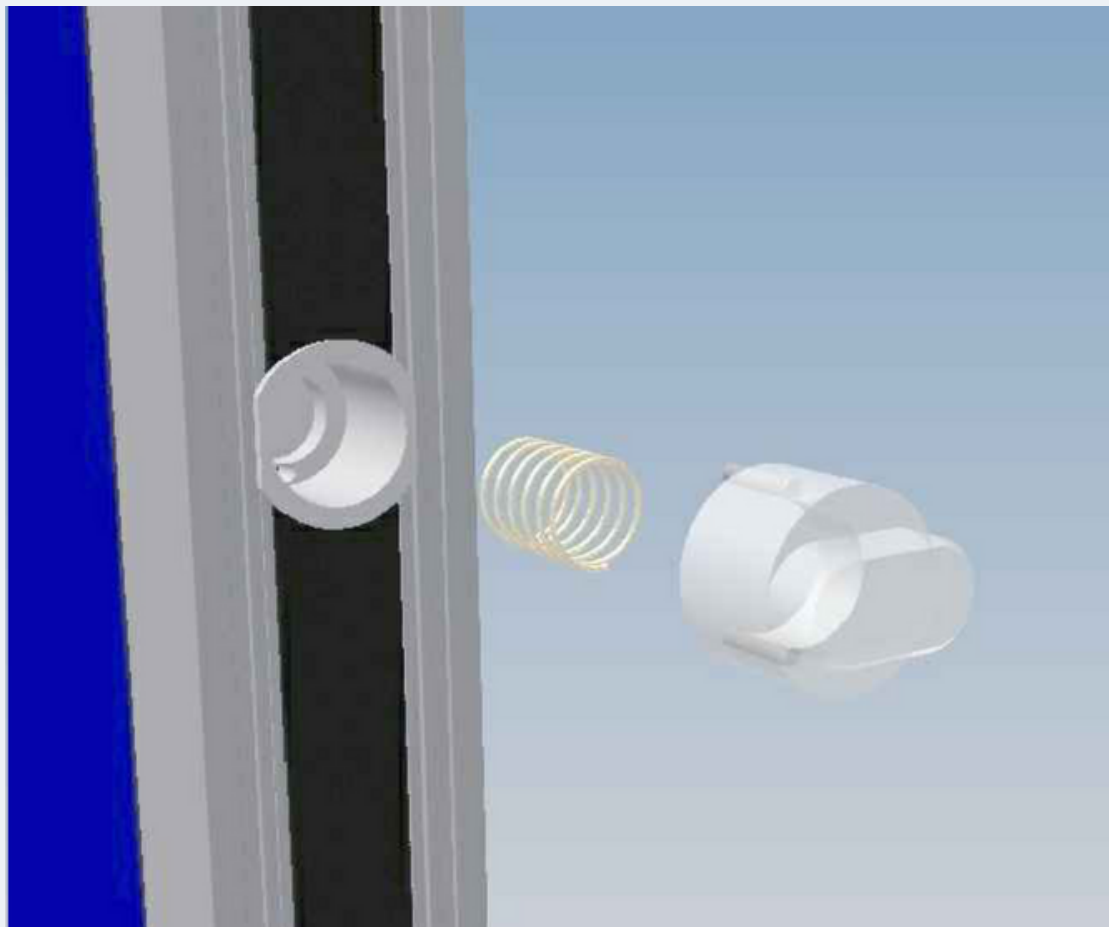
Step 1

- If necessary, loosen any pre-installed blades and rotate them into the open position (horizontally)
- Pick up a loose louvre blade and, holding it horizontally, place into the drive shaft, on the driven side of the vent.
- Please note that drainage holes within the louvre blade must point downwards when closed (outwards when open).



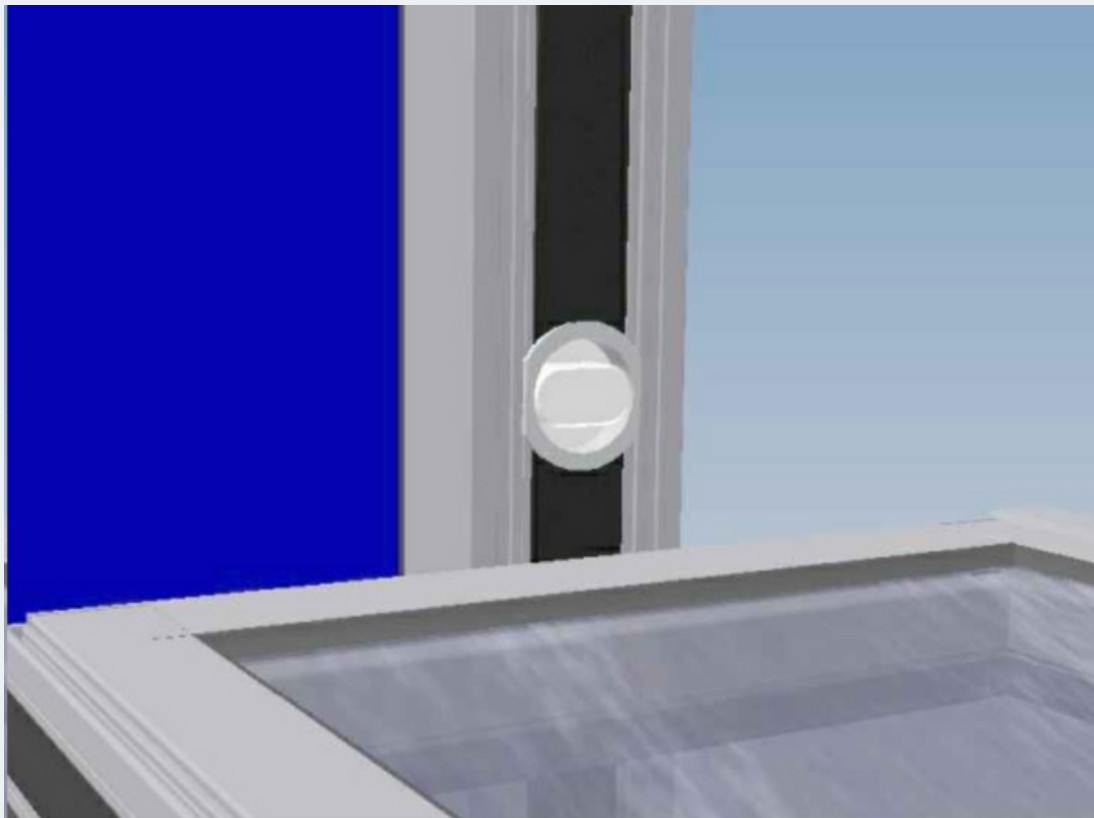
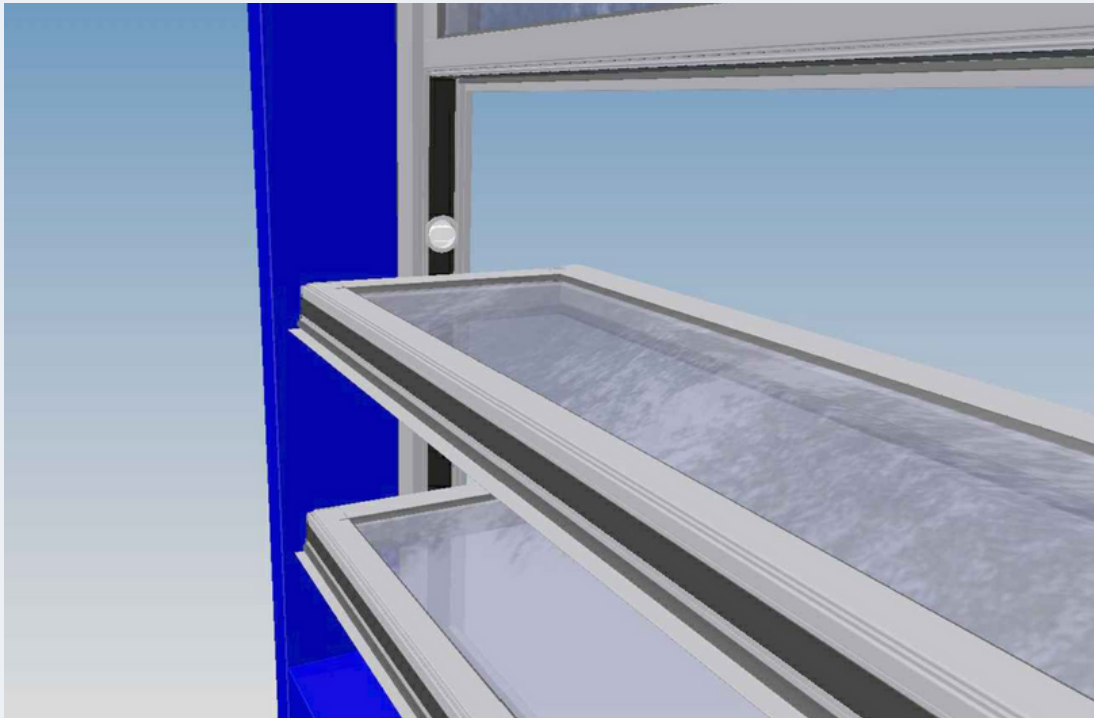
Step 2

- Pre-assemble the axle and spring into the bushing provided on the non-driven side.
- Ensure that the axle is horizontal, with the pins vertical, to suit the holes provided.



Step 3

- Press the spring axle flush into the bushing.
- Keeping the louvre blade in the open (horizontal) position, guide the blade upwards until the axle fully engages in the recess provided.
- Once the blade is clipped in, it should now be possible to turn the blade smoothly.



Step 4

- Close the louvre blade by hand, align it and push the clamp upwards (on the driven side) with slight pressure. Keeping the clamp in position, tighten both stud bolts firmly.

